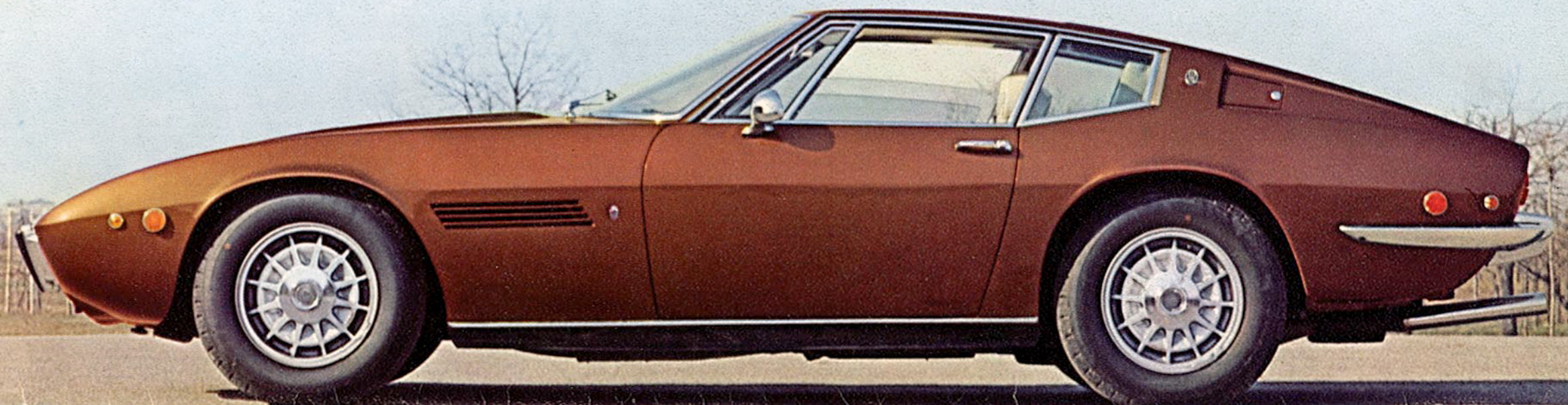




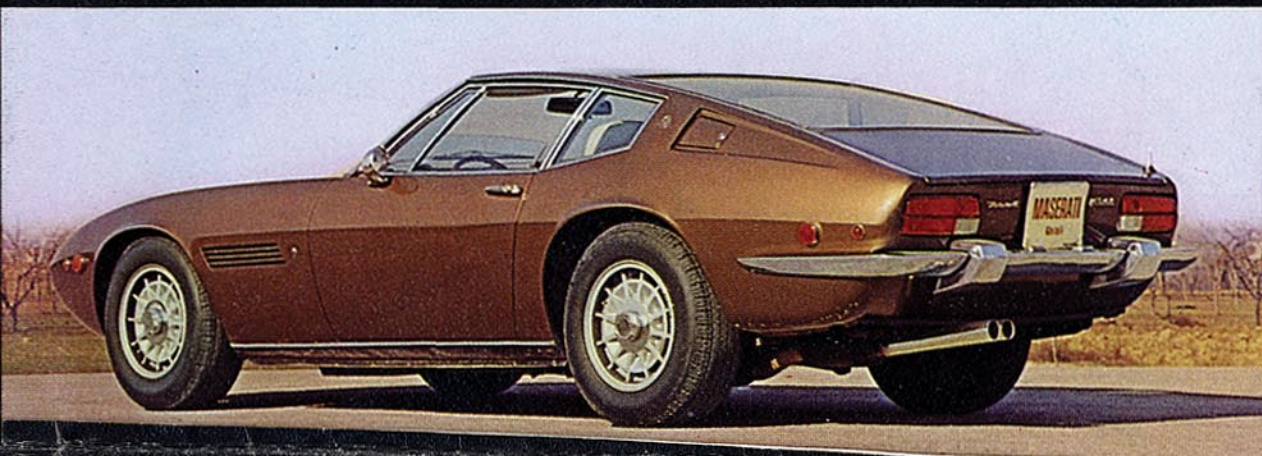
# MASERATI

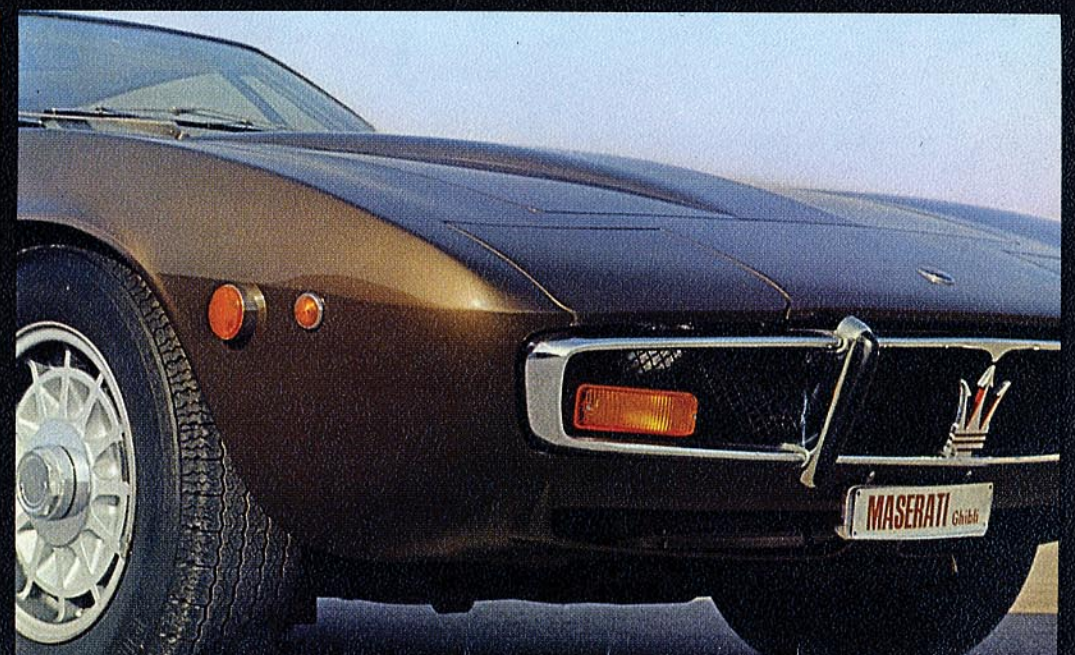
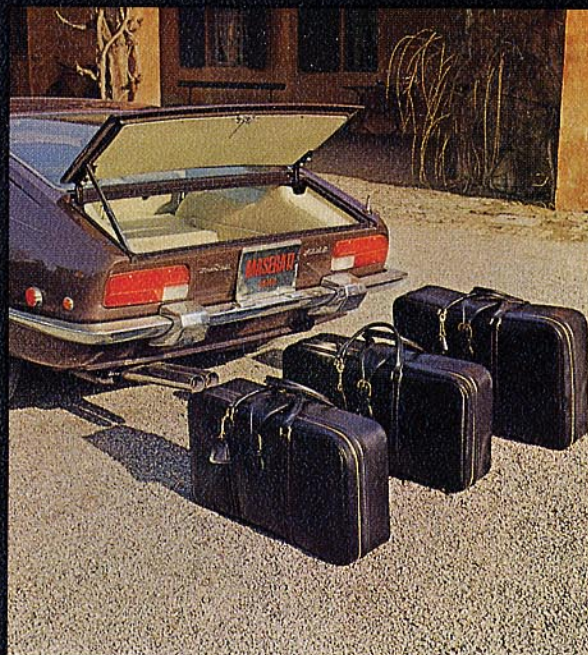
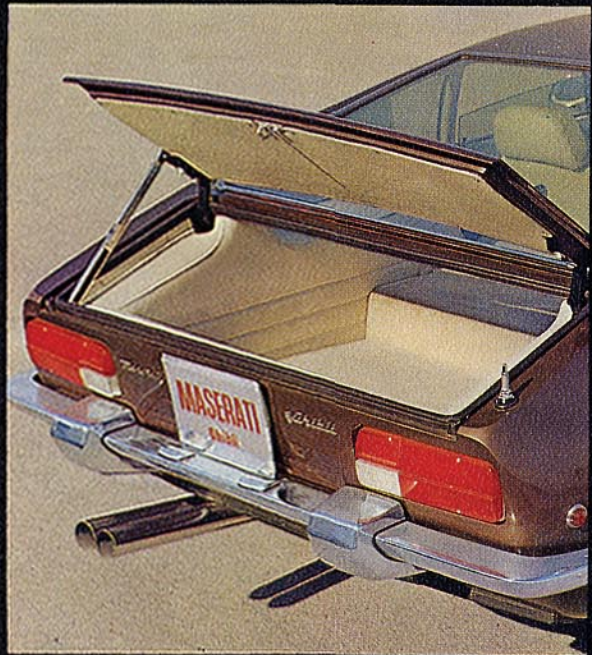
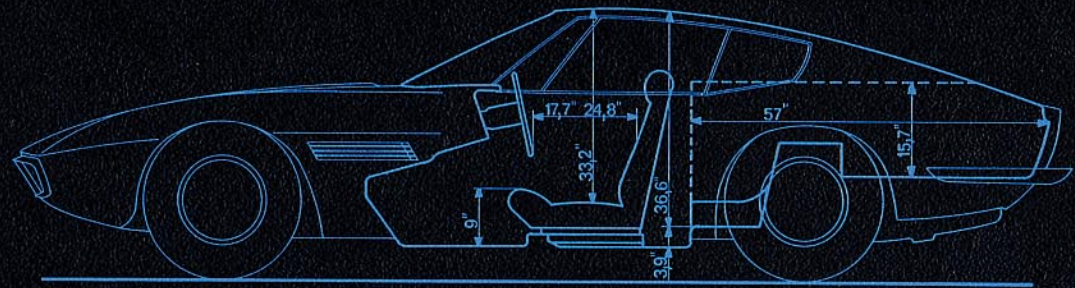
## GHIBLI<sup>ss</sup>

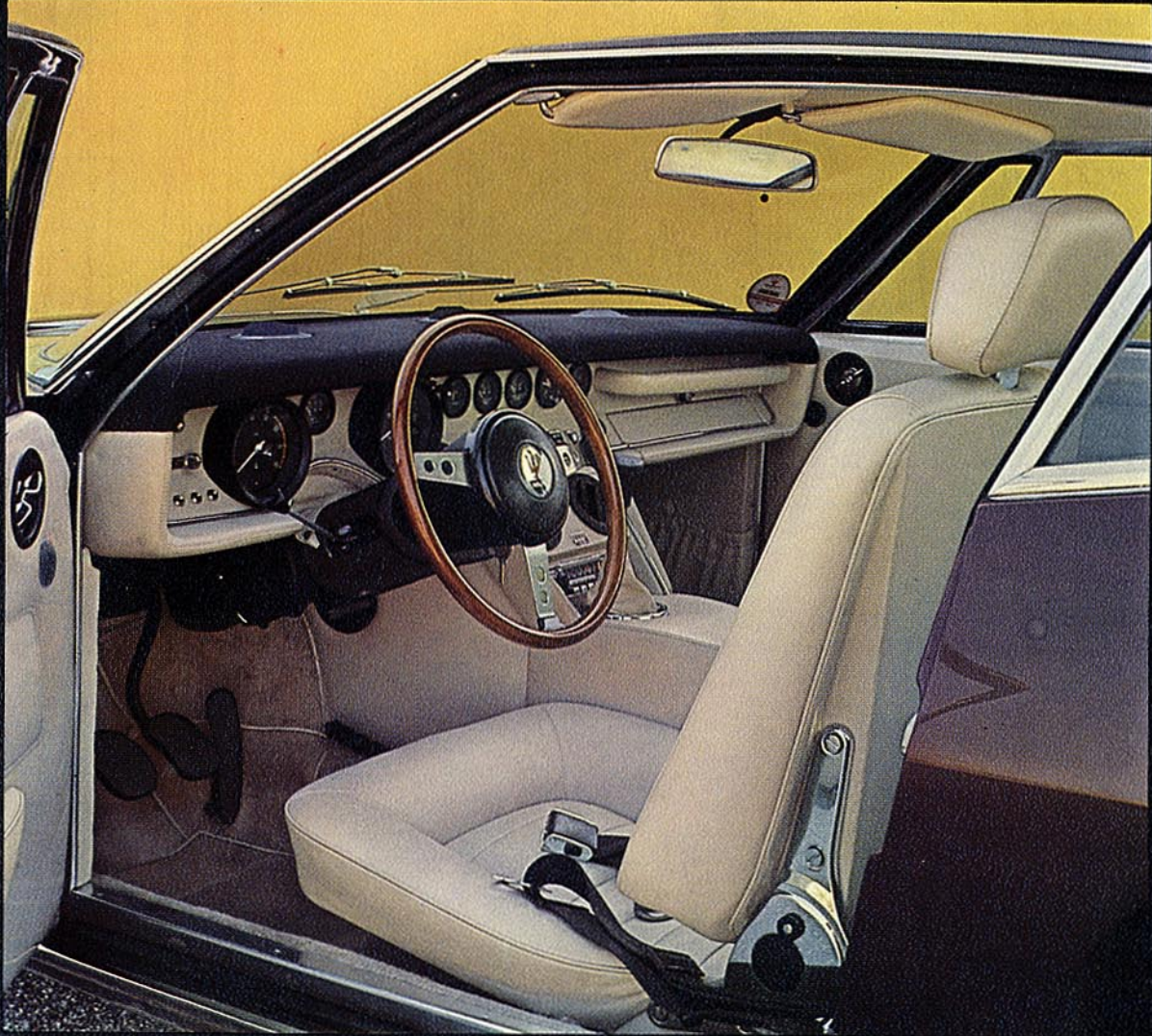




# MASERATI







**MASERATI**

# GHIBLI<sup>SS</sup>

**GRAN TURISMO** 2 seats

**BODY:** Coupé

Overall length . . . . .	feet 15,2	- mm. 4690
Overall width . . . . .	feet 5,77	- mm. 1790
Overall height . . . . .	feet 3,6	- mm. 1160

**ENGINE:** 8 cylinders in V formation - 90°

Bore . . . . .	inches 3,7	- mm. 93,9
Stroke . . . . .	inches 3,5	- mm. 89
Cubic capacity . . . . .	cu-in 3	- cc. 4930

Hemispherical combustion chambers - 4 overhead chain driven camshafts - Direct valve control - 4 twin choke carburetors - Ignition system with transistor - Cooling system with radiator and centrifugal water pump - Forced lubrication - Total draining. Compression ratio . . . . . 8,5 : 1  
BHP . . . . . 335 at 5500 R.P.M.

**CLUTCH:** Single dry plate with flexible coupling and hydraulic control.

**GEAR-BOX:** Five synchronized speed and reverse.

**CHASSIS:** Integral body chassis construction.

Wheel base . . . . .	feet 8,3	- mm. 2550
	front 4,7	- mm. 1440
Ground level track . . . . .	rear 4,6	- mm. 1420

**SUSPENSION:** Front: independent, coil spring, stabilizing torsion bar and telescopic dampers - Rear: stabilizing torsion bar, telescopic dampers, plate springs and radial rod.

**BRAKES:** Ventilated disc with servo unit in dual circuit.

**FUEL TANKS** 2 separate

Total capacity . . . . . USA. gall. 26,5

Normal consumption . . . . .	m.p.g. US. 16 - 15 m.p.g.
Total weight . . . . .	lbs. 3640

**LARGE LUGGAGE COMPARTMENT** . . . . . cubic feet 24

**WHEELS:** Magnesium-alloy . . . . . 7½ × 15"

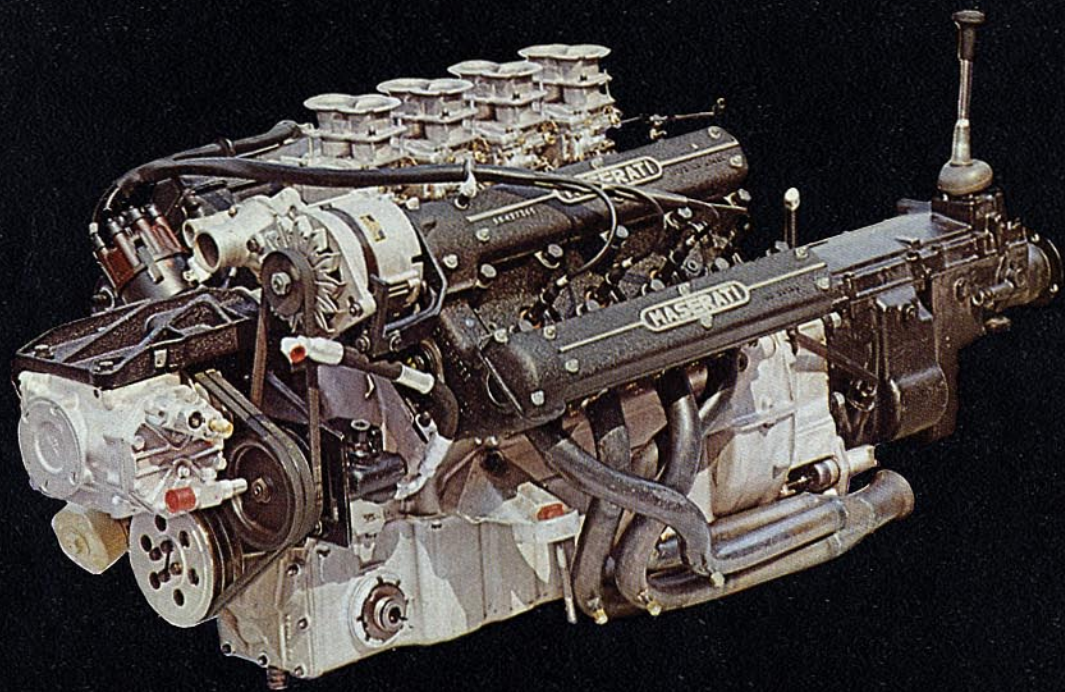
**TIRES** . . . . . VR-70 - 215 × 15"

**MAX. SPEED** . . . . . M.P.H. 174

**STANDARD:** Adjustable steering wheel, leather upholstery, steering lock device, tinted windows, electric windows, electric defroster for rear glass, reclining seats, head rests, clock, air conditioning.

**OPTIONAL:** Automatic transmission, power steering, radio, luggage cover, wheels dial aluminium, etc.

The above data are only indicative.



# MASERATI GHIBLI<sub>SS</sub>

OFFICINE A. MASERATI S.p.A.  
VIA CIRO MENOTTI 322  
TEL. (059) 23.01.01/2/3 TELEX 51248  
MODENA (ITALIA)